



You cannot get through a single day without having an impact on the world around you. What you do makes a difference, and you have to decide what kind of difference you want to make.

Jane Goodall

We Eat Responsibly 2015-2016

Czech republic
Slovenia
Romania
Slovakia
Bulgaria
Croatia
Poland
Latvia
Malta



513 schools

3012 teachers trained

13 592 teachers involved

27 696 teachers organizing event

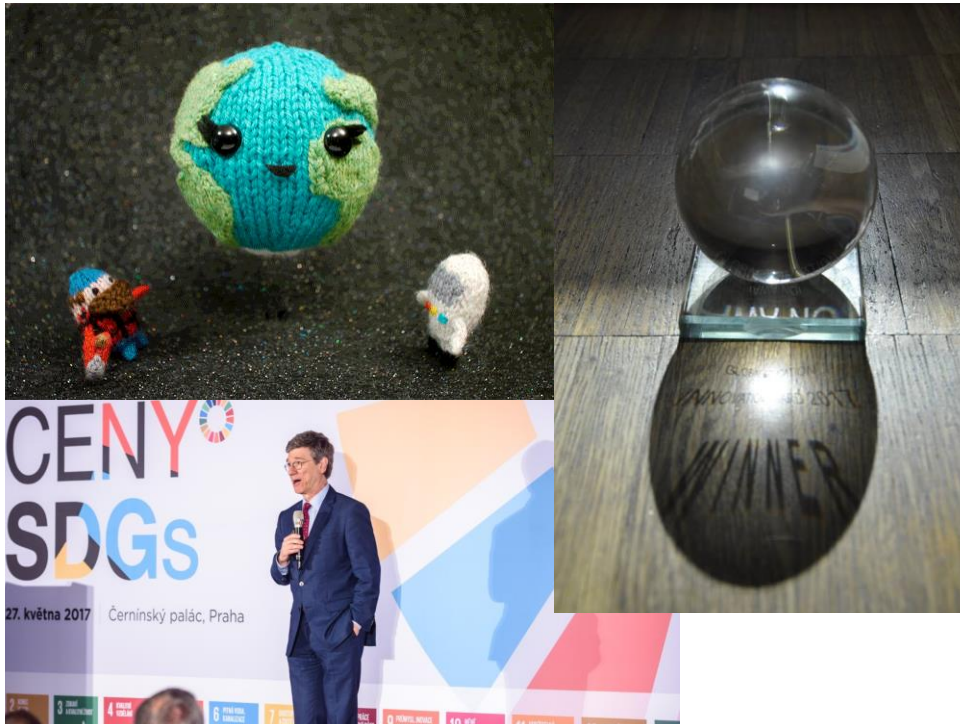


76 000 parents involved
1885 parents active part of eco-teams



42 212 households
= participating in the food review
114 926 parents
= participating on the events

734 828
= total number of participants!



How can we feed 10 billion people by 2050
without exploiting resources of the Planet?

4600 kilocalories of food are harvested per day for every person on the planet; only around 2000 are eaten





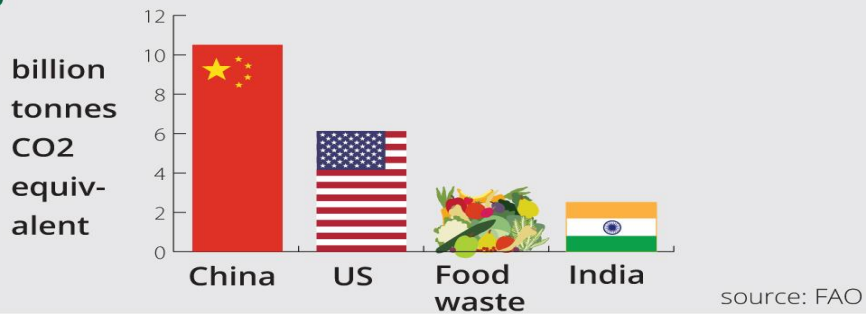
**One third of the world's food is wasted
– 1.3 billion tonnes per year**



**enough to feed 3 billion people,
or 10 times the population of the USA**

source: Tristram Stuart/FAO

If global food waste was a country, it would be the third largest greenhouse gas emitter after the US and China

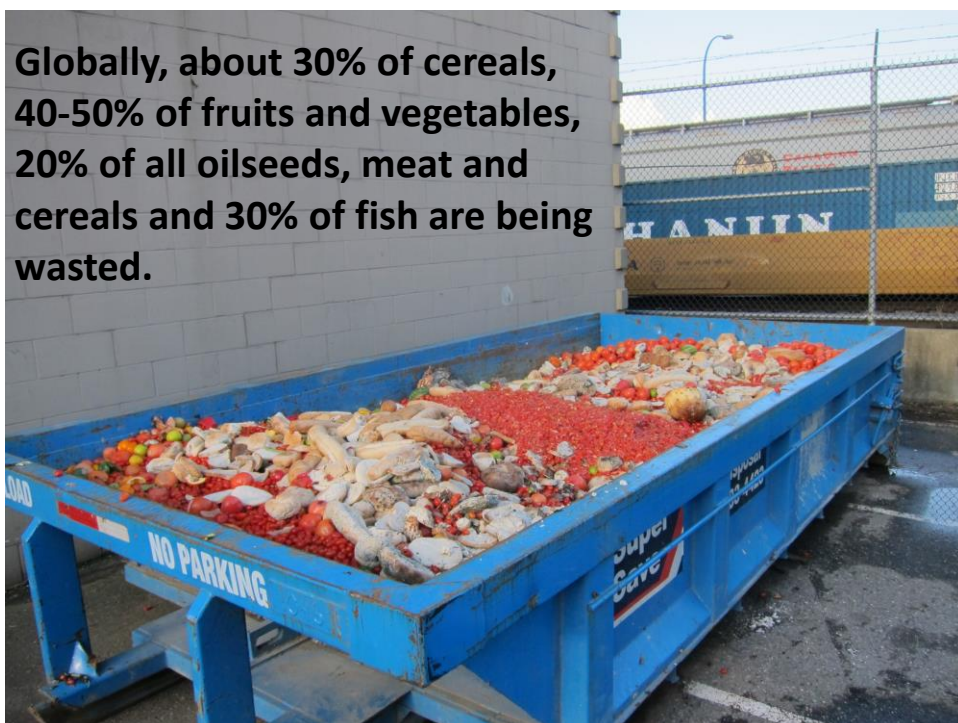


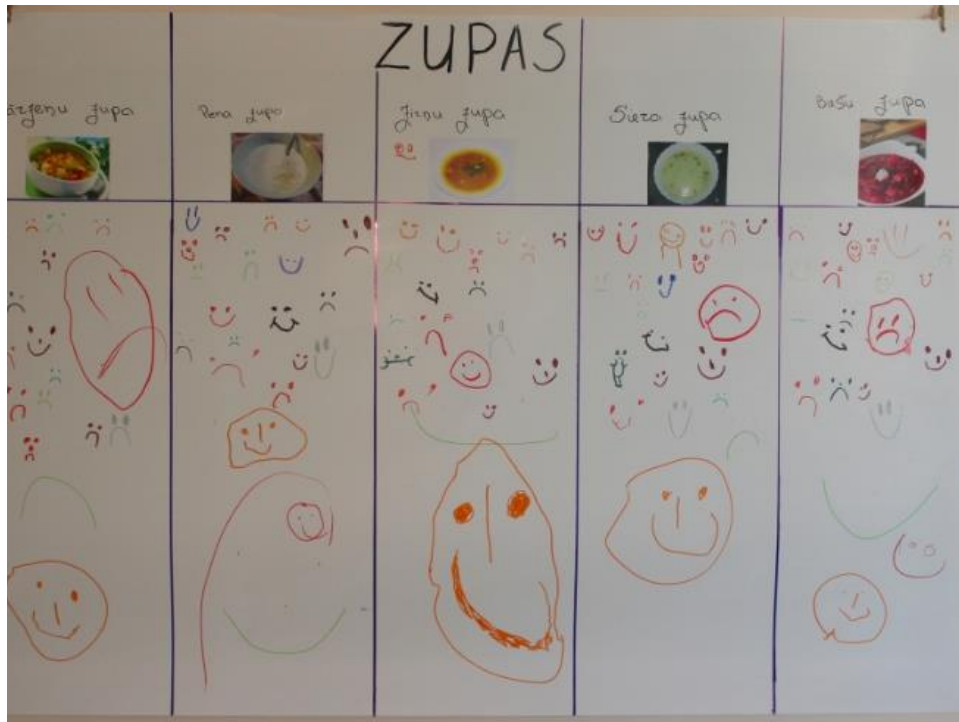
- Food waste generates 3.3 billion tonnes of greenhouse gases





<http://solvefoodwaste.eu/en>

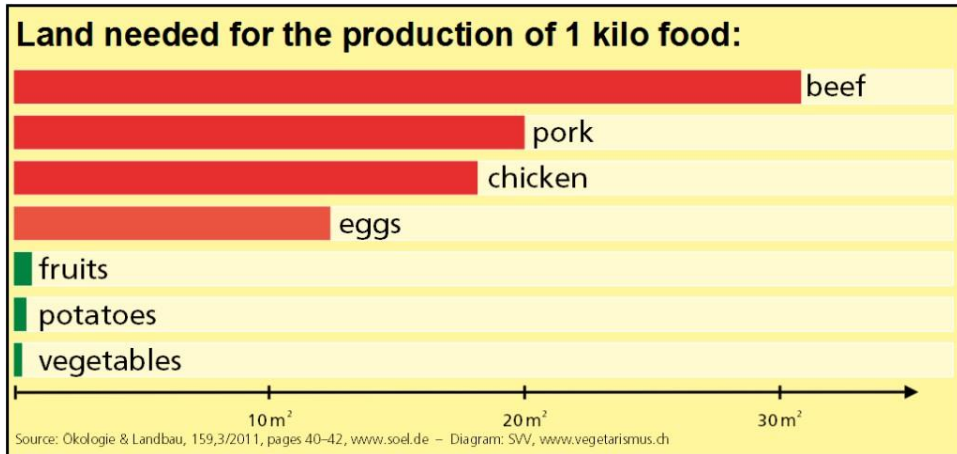


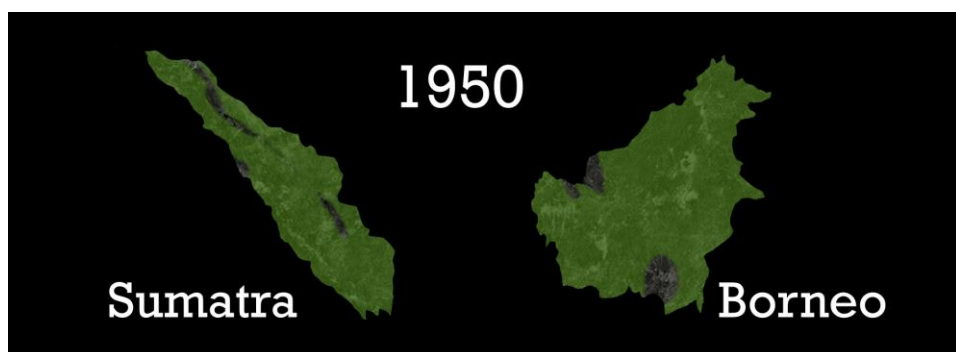


1/3 of the agricultural land worldwide is used to grow feed for farm animals. If this trend continues, in 2050 it is expected to be 1/2 of the overall agricultural land.



Hidden land





- 1985 – 8 mil t.
- 1995 – 15mil t.
- 2005 – 34 mil t.
- 2016 – 62 mil t.

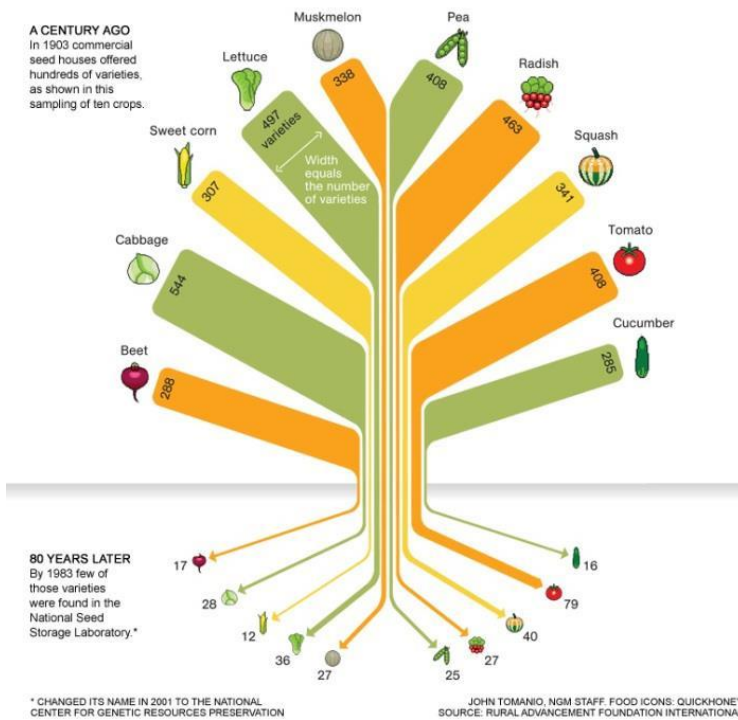








Svalbard Global Seed Vault (Arctic)



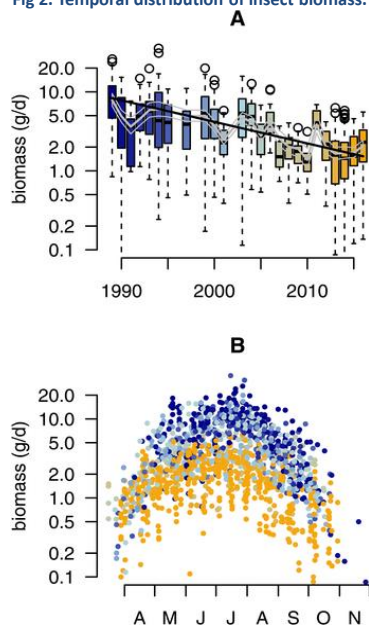


Which of these would you name as the world's most pressing environmental issue?

- climate breakdown
- air pollution
- water loss
- plastic waste
- urban expansion
- or something else..?

1. erasure of non-human life from the land by farming
2. industrial fishing
3. climate breakdown

Fig 2. Temporal distribution of insect biomass.



Flying insects surveyed on nature reserves in Germany have declined by 76% in 27 years.

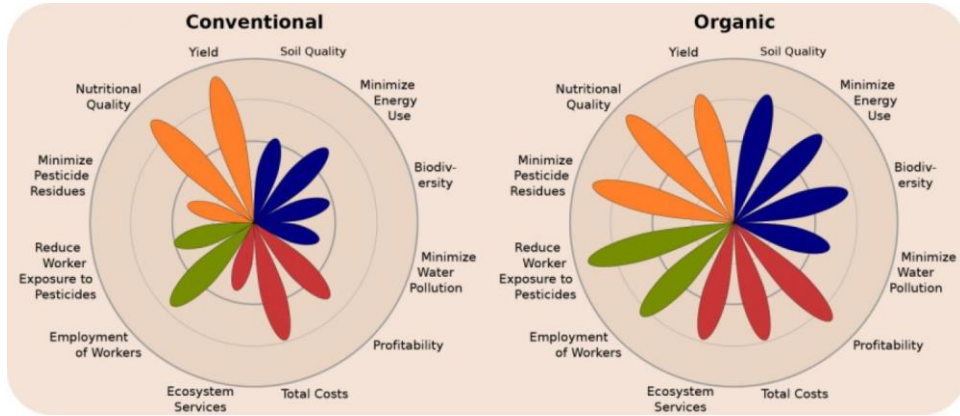
The most likely cause: the volume of pesticides and the destruction of habitat have turned farmland into a wildlife desert.

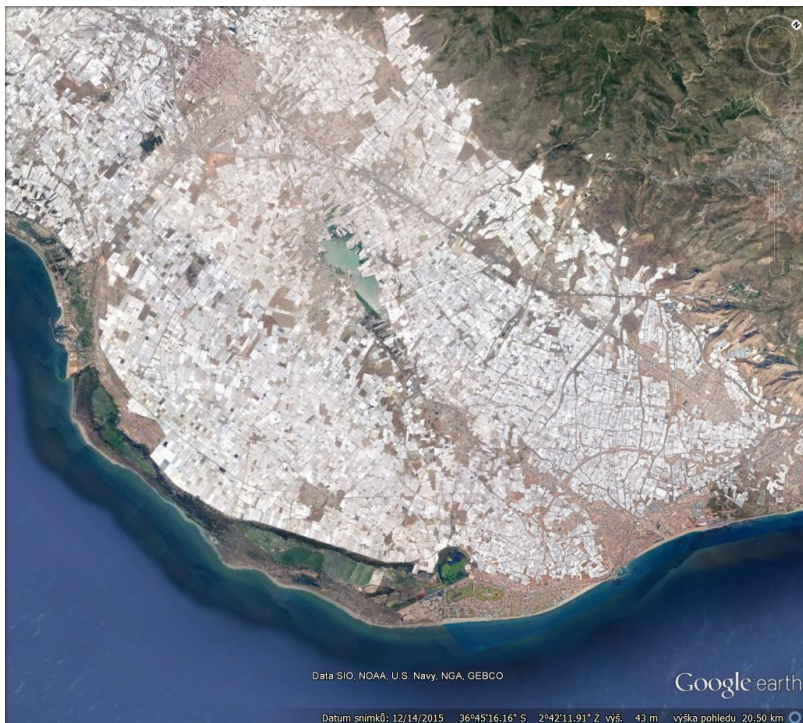
<http://journals.plos.org/plosone/article?id=10.1371/journal.pone.0185809>

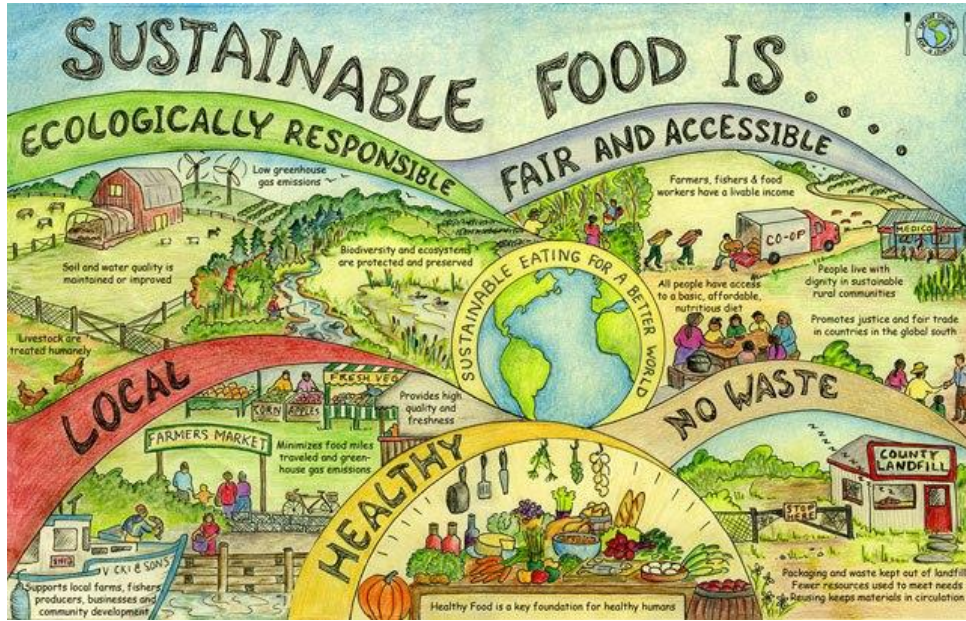


Hallmann CA, Sorg M, Jongejans E, Siepel H, Hoffand N, et al. (2017) More than 75 percent decline over 27 years in total flying insect biomass in protected areas. *PLoS ONE* 12(10): e0185809. <https://doi.org/10.1371/journal.pone.0185809>
<http://journals.plos.org/plosone/article?id=10.1371/journal.pone.0185809>

PLOS ONE
TENTH ANNIVERSARY







40% of the world population works in agriculture

Smallholder farmers produce nearly 75 % of the food consumed worldwide

18 % of the world population consumes:

- **39 % cereals**
- **41 % animal proteins** (meat, fish, dairy products) from the global production.



Več lokalne in sezonske hrane



Upoznajte ljude koji proizvode našu hranu



**Critical thinking without hope is cynicism.
Hope without critical thinking is naivete.**

Maria Popova



www.themarketgardener.com









www.eatresponsibly.eu

Tereza Čajková
cajkova@glopolis.org